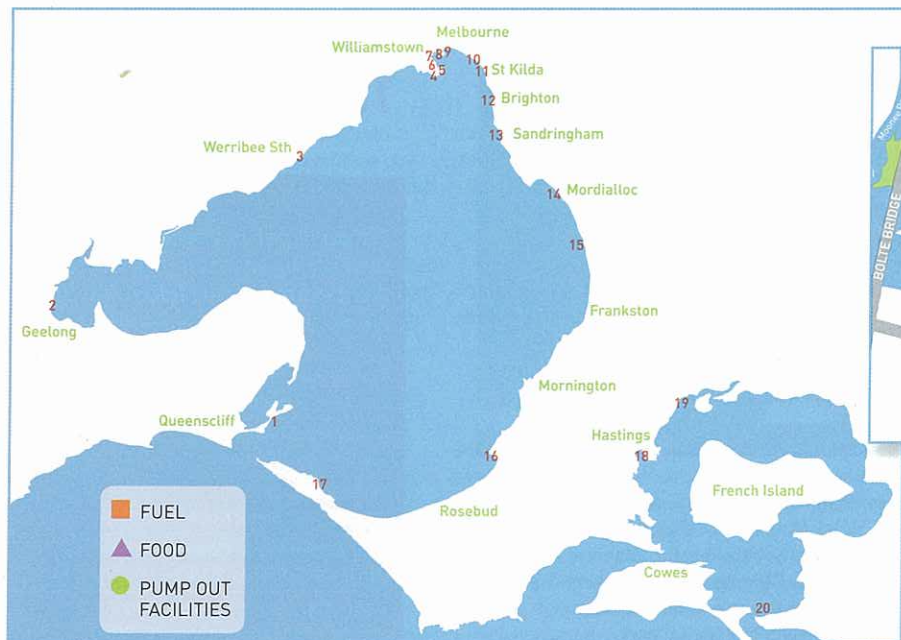


# GUIDE TO THE BAYS DESTINATIONS AND FACILITIES



## 1 Queenscliff

During reconstruction 2007-8 limited casual or overnight berthing available.

## 2 Royal Geelong Yacht Club

▲ (diesel only)

Lat/long: 38°08'35.24"S 144°22'5.48"E

Bookings: contact Marina office on 0418 524 867 or marina@rgyc.com.au

## 3 Wyndham Cove

Planned

## 4 The Anchorage Marina

Williamstown ■▲●

Lat/long: 37°51'11.29"S 144°54'13.04"E

Bookings: (03) 9397 6977 a/h: 0417 511 340

w: www.anchoragewilliamstown.com.au

e: info@anchoragewilliamstown.com.au

## 5 Royal Victoria Motor Yacht Club

Williamstown ▲

Lat/long: 37°51'S, 144°54' E

Phone: (03) 9397 5076

## 6 Royal Yacht Club of Victoria

Williamstown ■▲

Lat/long: 37°51.7'S, 144°54.4'E

Phone: Yard and Marina: (03) 9397 2898

Office: (03) 9397 1277

## 7 Pier 35 ■▲

Phone: (03) 9646 1200

## 8 d'Albora Marinas Victoria Harbour ▲

Lat/long: 37°49'08.85"S 144°56'30.06"E

Overnight berths available: 8 berths

Cost: Visitor berths from \$50 inc. GST p/n

Facilities: Dockmaster assistance 7 days a

week, Customer Club Lounge, Bathroom

facilities, power and water to berths;

wireless internet, reciprocal berthing rights

at other d'Albora Marinas. Victoria Harbour

has been labelled the "jewel in the crown"

of Melbourne's Docklands, the largest and

most prestigious waterfront development

ever undertaken in Australia. It offers a

direct connection to the CBD via Collins

Street and a vibrant mix of residential,

office, retail and community open space set

along 2.5 km of water frontage.

Phone: (03) 9602 4511

e: vicharbour@dalboramarias.com.au

## 9 Yarra's Edge ▲

Lat/long: 37°50'S 144°59'E

Overnight berths available: 19 berths

Cost per night: \$50 inc. towels and toiletries

Facilities: Full time Marina Manager Office

open 9am - 6pm 7 days a week, 24 hr

security with monitored screens, marina

lounge, three onshore bathrooms marina

staff assist all boats with berthing on

arrival, restaurant, cafes, supermarket

and day spa. Marina YE guests enjoy

restaurant discounts.

Bookings: (03) 9681 8394

## 10 St Kilda Marina ■▲

## 11 Royal Melbourne Yacht Squadron St Kilda ▲

Lat/long: 37°51'80"S 144°57'89"E

Bookings: (03) 9534 0227

## 12 Royal Brighton Yacht Club ■▲●

Lat/long: 37°54'58"S 144°59'15"E

Phone: (03) 9592 4022

## 13 Sandringham ■▲●

Lat/long: 37°56'46"S 144°59'46"E

Bookings: (03) 9598 7444

## 14 Mordialloc Creek

(shallow entrance and road bridge)

## 15 Patterson River Marina ■▲

(restricted access due to road bridge)

Lat/long: 38°04'56"S 145°07'00"E

Bookings: (03) 9772 6622

## 16 Martha Cove ■

(available December to March)

Lat/long: 38°20'S 145°01'E

Overnight berths available: 50 berths

Cost: from \$50 p/n.

Showers and Toilets will be available from

December 2007

Phone: (03) 5987 0827 (bookings essential)

## 17 Blairgowrie Yacht Squadron

Lat/long: 38°21'30"S 144°46'30"E

Bookings: (03) 5988 8453

## 18 Westernport Marina Hastings

## 19 Yaringa Boat Harbour (Westernport) ■▲

Lat/long: 37°15'S 145°14'E

Phone (03) 5977 4154, Fax: (03) 5977 3156,

e: info@yaringa.com.au or

www.yaringa.com.au for more details.

## 20 Newhaven